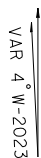
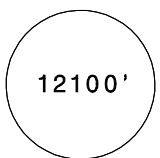
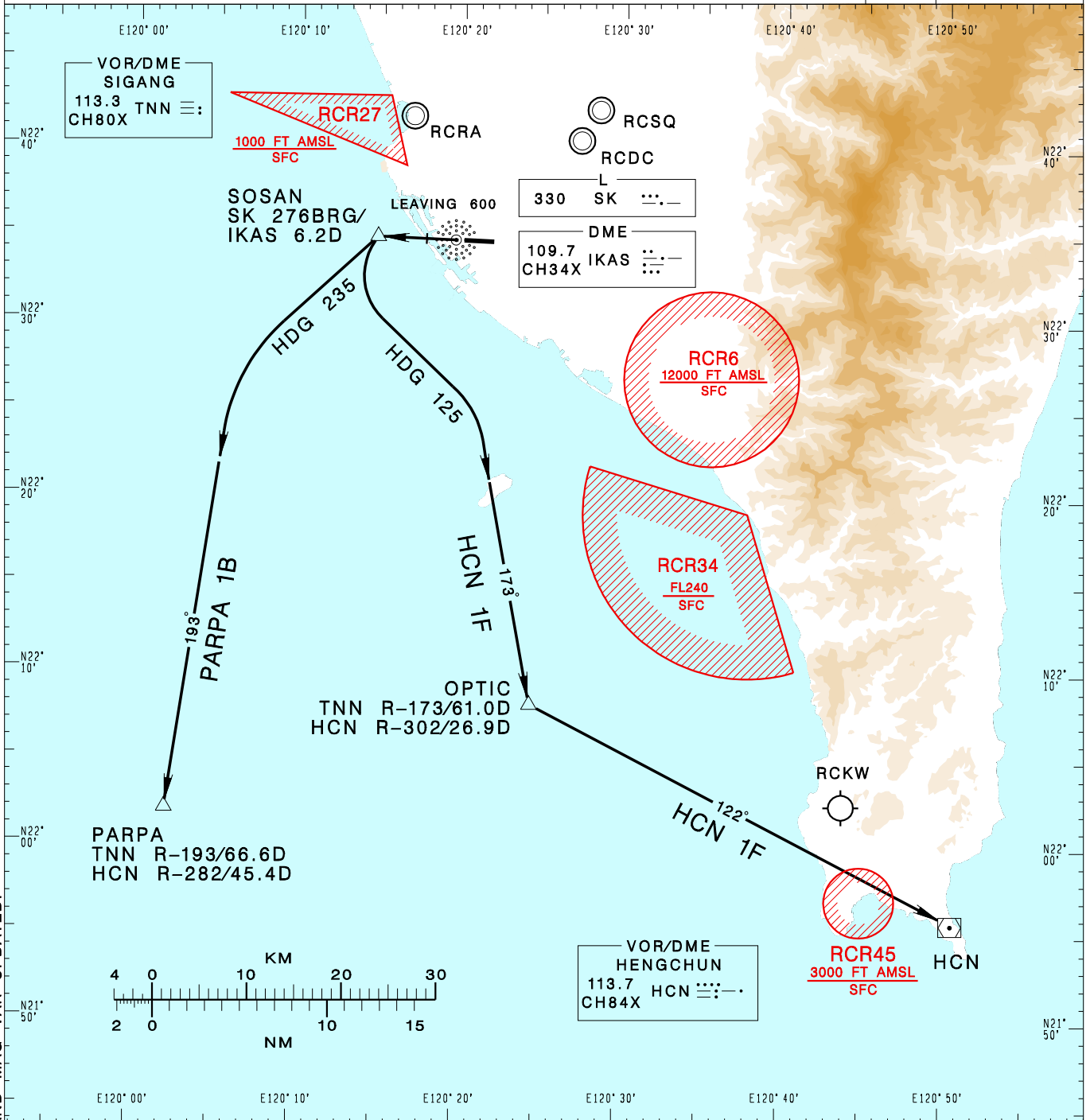


高雄國際機場
KAOHSIUNG INTL AD

RCKH SID
HCN 1F(RWY27)
PARPA 1B(RWY27)

KAOHSIUNG APP 124.7 125.7	KAOHSIUNG TWR 118.7 120.7	ATIS 127.8	 	
Apt Elev: 32'		Trans Level: FL130		Trans Alt: 11,000'
BEARINGS ARE MAGNETIC; DISTANCES ARE NAUTICAL MILES; ELEVATIONS, HEIGHTS IN FEET				



CHANGES: LEG CRS, MSA AND MAG VAR UPDATED.

HENGCHUN ONE FOXTROT DEPARTURE
Climb on RWY HDG until leaving 600ft, then track SK 276BRG to SOSAN, then turn left HDG 125 to track TNN R-173 to OPTIC, then track HCN R-302 to HCN.

PARPA ONE BRAVO DEPARTURE
Climb on RWY HDG until leaving 600ft, then track SK 276BRG to SOSAN, then turn left HDG 235 to track TNN R-193 to PARPA.

NOTE

1. Minimum climb gradient required: 4%(245ft/NM) until 2,000ft.
2. Caution: pier cranes, terrain and stacks east, west and south of the airport.
3. ATS surveillance required.